

# ELECTRIC/STEAM HOT WATER HEATER

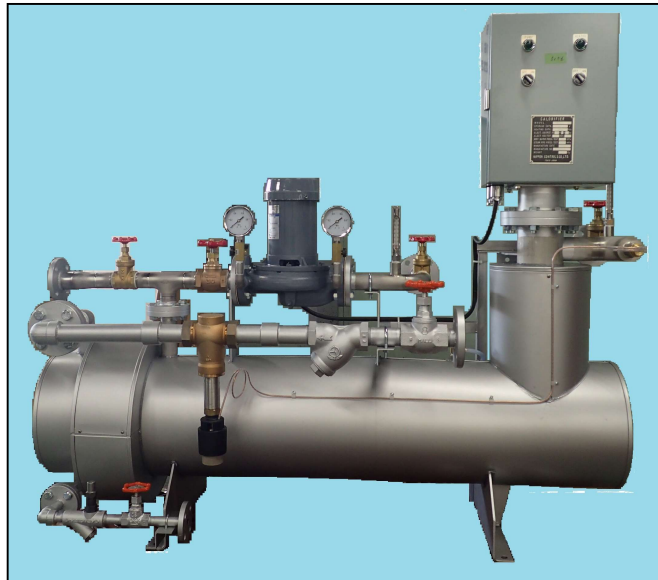
(with circulation pump)

For an abundant supply of hot water wherever it is needed :  
in galley, bath room and laundry room.

## Main Features

1. The heating coil and electric heater can be selected according to the specific needs of each vessel. The supply of hot water always maintain even fresh water temp. changed.

2. Operation is full-automatic, no human labor is required at all. Water supply and hot water temp. are controlled automatically. Protective features are also provided to ensure safe operation, including an automatic temp. control valve to prevent overheating.



## SPECIFICATIONS

MODEL	TN20E3S
ELECTRIC SOURCE	AC440V 3φ 60Hz
WATER IN/OUT TEMP.	10°C / 60°C
SUPPLY WATER PRESSURE	0.4 ~ 0.5MPa
SUPPLY STEAM PRESSURE	0.55MPa (MAX. 0.6MPa)
SUPPLY STEAM TEMP.	158.1°C : SATURATED STEAM
STEAM CONSUMPTION	300kg/h
ELECTRIC HEATER	20kW
CIRCULATION PUMP	0.25kW
HOT WATER CAPACITY	3.0m <sup>3</sup> /h
HEAT EXCHANGE CAPACITY	174.4KW (150000kcal/h)
HEAT EXCHANGE AREA	2.4m <sup>2</sup>
WATER SIDE DESIGN PRESS.	0.6MPa
STEAM SIDE DESIGN PRESS.	0.7MPa
DRY WEIGHT (APPROX.)	180kg
RUNNING WEIGHT (APPROX.)	266kg
PAINT COLOR	7.5BG7/2



**NIPPON CONTROL'S CO., LTD.**

HEAD OFFICE : 2-2-18 Sotokanda Chiyoda-Ku Tokyo Japan TEL:03 (5298) 2332

E-mail : ncc@ncc.jp.com